



M/W/F or T/TH
AM or PM class options.
AM: 9:30-12:00pm
PM: 12:30-3:00pm

Giggletime Preschool



enrollment



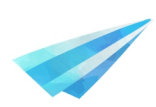
2025 - 2026 SCHOOL YEAR

**BEGINS MARCH 3RD (CURRENT STUDENTS)
AND MARCH 17TH (NEW STUDENTS)**



WHY ENROLL WITH US?

Give your child the perfect start at Giggletime Preschool! Our program for ages 3-5 blends academics with music, art, dance, tumbling, science, and play to create a fun and enriching environment. We nurture curiosity, creativity, and confidence, helping little learners develop essential skills while building social connections in a supportive setting. With engaging hands-on activities and a caring atmosphere, Giggletime Preschool is the perfect place for your child to grow, learn, and thrive!



CONTACT US! 

Phone: 907-357-3933

Email: sonjasstudiogiggletime@gmail.com



TO REGISTER:  

All registration is done in person at the front desk.
5700 E Pilarim Ct Wasilla AK 99654

Class Days	Class Time	Ages Eligible	Monthly Price (8 installments)	Semester Price (15 Weeks)	Yearly Price (30 Weeks)	# of School Days
2 Day T/TH Morning	9:30-12:00pm	3-5 Years	\$162.50	\$650.00	\$1300.00	60
2 Day T/TH Afternoon	12:30-3:00pm	3-5 Years	\$162.50	\$650.00	\$1300.00	60
3 Day M/W/F Morning	9:30-12:00pm	3-5 Years	\$243.75	\$975.00	\$1950.00	90
3 Day M/W/F Afternoon	12:30-3:00pm	4-5 Years	\$243.75	\$975.00	\$1950.00	90

Upon enrollment in our program, you are obligated to cover the entire semester's tuition. Refer to the provided semester dates. If you have any inquiries regarding your financial commitment, kindly seek clarification from the front desk before confirming your spot.

SCHOOL COSTS

- Registration fee: \$135.00 Girls / \$115.00 Boys
This one time NON REFUNDABLE fee covers:
 - \$15.00 Paperwork registration fee
 - \$30.00 Fall semester curriculum fee
 - \$30.00 Spring semester curriculum fee
 - \$60.00 (Girls) \$40.00 (Boys) recital costume fee
- Tuition payments: Prices shown in chart above
Tuition is made in 4 monthly installments. Tuition is due by the first week of school each month. Aug, Sep, Oct, Nov, and Jan, Feb, Mar, Apr. You can pay upstairs at the front desk, or in your parent portal online.
- Recital Tickets: Christmas & Spring Dance Recitals
Students will perform a cute dance that they will learn in dance class at the end of each semester. Tickets are required to attend. We will let you know when they go on sale. One recital will be a tap performance, and the other will use ballet/ jazz shoes.
- Dance shoes: Black Tap & Pink Ballet(Girls) / Black Tap & Black Jazz(Boys)
The students will need dance shoes for dance time. The girls will need pink ballet shoes and black tap shoes. The boys will need black jazz shoes and black tap shoes. If you have any questions regarding shoes, feel free to ask us, we are more than happy to help. Keep in mind, the kids feet grow very fast at this age, and they will need them all year long. It is best to size up!

SEMESTER INFO

Fall Semester Dates:
Fall semester is 15 weeks.
August 18th -
December 5th, 2025.

We are closed the entire week of November 24th-28th for Thanksgiving Break. This closure is not counted as part of the 15 weeks.

Spring Semester Dates:
Spring semester is 15 weeks.
January 5th -
April 24th, 2026.

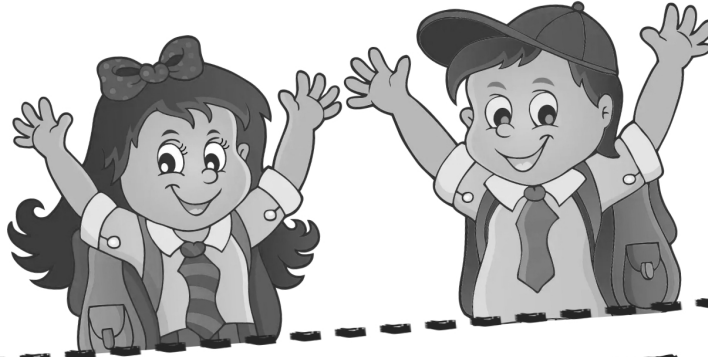
We are closed the entire week of March 9th-13th for Spring Break. This closure is not counted as part of the 15 weeks.

RECITAL DATES

Christmas Recital:
Saturday, December 6th

Spring Recital:
Saturday, April 25th

FALL 2025
&
SPRING 2026



GIGGLETIME PRESCHOOL

WHAT YOU WILL NEED TO BE
READY FOR THE FIRST DAY:

1. WATER BOTTLE WITH YOUR CHILDS NAME ON IT.
2. SPARE SET OF CLOTHES IN A ZIPLOC BAG WITH YOUR CHILDS NAME ON IT. THIS WILL STAY WITH US DURING THE SCHOOL YEAR.
3. DANCE SHOES IN A ZIPLOC BAG WITH YOUR CHILDS NAME ON IT.
4. SHOW AND TELL ITEM, AS SHOW AND TELL WILL BE THE FIRST DAY OF CLASS.

FIRST DAY OF SCHOOL:

MONDAY, AUGUST 18TH
FOR M/W/F CLASSES
&
TUESDAY, AUGUST 19TH
FOR T/TH CLASSES.



QUESTIONS?
357-3933

EMAIL: SONJASSTUDIOGIGGLETIME@GMAIL.COM

WEBSITE: SONJASSTUDIOAK.COM

FACEBOOK: GIGGLETIME PRESCHOOL AT SONJA'S

Drop-Off & Pick-Up

- Morning Classes: Doors open at 9:20 AM. Pick-up is at 12:00 PM.
- Afternoon Classes: Doors open at 12:20 PM. Pick-up is at 3:00 PM.
- Please do not attempt to drop off your child earlier than the designated times.

For pick-up, please wait in the hallway until we open the doors to release the children. Do not enter the classroom before dismissal. Both the front and back doors to the building will be open, so you may use whichever entrance is most convenient for you. Each child has a cubby in the downstairs hallway for their belongings. Please have your child remove their shoes before entering the Giggletime classroom.

Show & Tell

We have Show & Tell every week on Monday or Tuesday. Please have your child bring an item and place it in their cubby upon arrival. This is a fun way for them to share something special and practice speaking in front of their classmates!

Dress Code & Dance Shoes

Please have your child wear comfortable, moveable clothing that allows for free movement during activities. No clothing with buttons or zippers.

- Tumbling & Gym Time: Bare feet or socks are best.
- Dance Days: Girls will need tap & ballet shoes. Boys will need tap & jazz shoes.

We have a designated spot where you can leave their dance shoes at the studio, so you don't have to remember them each week!

Performances & Costumes

Costumes are included in your registration fee and will be worn for both the Christmas and Spring recitals (dates listed above). There is no additional charge for costumes, and they will be provided in time for the performances.

Snacks & Water Bottles

We provide a small snack every day. Please inform us of any allergies so we can accommodate your child's needs. Each child should bring a water bottle labeled with their name to class every day. Please ensure it is filled only with water. We recommend easy-to-use water bottles that your child can manage independently.

School Schedule & Closures

Semester dates are listed on the front page of this packet. The only scheduled closures are for Thanksgiving week and Spring Break. We remain open for all other holidays.

Class Size & Staffing

Each class has a maximum of 15 children with three teachers to ensure an ideal student-to-teacher ratio and quality learning experience.

Class Time

The first part of class is play/free time for the kids as we wait for everyone to arrive. This is the only time we spend playing with toys. After that, we dedicate 30 minutes to circle time where we focus on learning the basics, such as colors, numbers, seasons, shapes, days of the week, the calendar, patterns, letters, and more. In addition to circle time, we also have activities such as show & tell, tumbling, dance, gym time, art, worksheets, snack, table time, reading, music, science, and much more! Each week, we introduce a new theme to keep our routines fresh and exciting for the kids.

Potty Training Policy

All children must be fully potty trained to attend Giggletime Preschool. Diapers and pull-ups are not allowed. Our classroom is conveniently located near multiple restrooms, and children are welcome to use them whenever needed. We also have designated times when we ask each child individually if they need to go. If your child tends to get distracted and forgets until it's too late, please let us know, and we will provide additional reminders.

Communication & Updates

We strive to keep parents informed! You will receive monthly newsletters with important updates and reminders. These newsletters are sent out at the beginning of each month, posted on the bulletin board outside our classroom, and available online on our website. If you ever have questions, please feel free to ask!

Birthdays

We love celebrating birthdays! You are welcome to bring cupcakes or a special treat for snack time on or near your child's birthday. We will sing to them, provide a birthday crown, and give them a small birthday prize. Please give us a heads-up in advance so we can check for allergies. No nut products, please.

Tuition & Payments

Monthly tuition installments are due at the beginning of each month. Payments can be made upstairs at the front desk via cash, card, or check, or you may pay online through your Parent Portal. A late fee will apply if payment is not received by the 15th of the month.

End-of-Year Celebration

We will wrap up the school year with a special presentation and party! Details, including the date and time, will be provided as the event gets closer. This celebration is usually held on the last day of school.